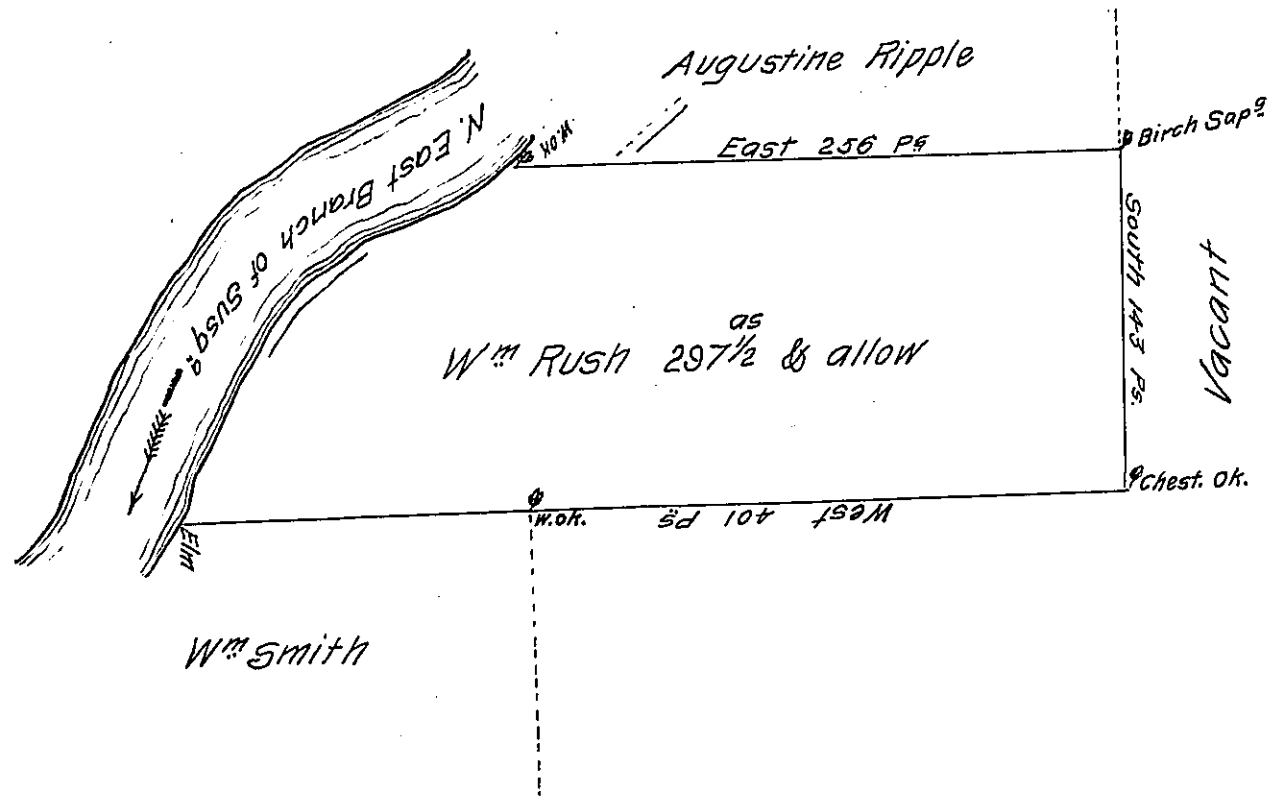


page 242



A Draught of a tract of land called — situate on the Easterly Side of the North East Branch of Susqueh<sup>a</sup> River adjoining and above land surveyed for William Smith / and about four or five miles above land surveyed for David Tressler / in the County of Northumberland containing two hundred & ninety-seven acres & a half besides the usual allowance of six  $\frac{1}{2}$  Cent. for Roads & to surveyed the 24<sup>th</sup> day of August 1774 for William Rush in pursuance of a warrant dated the 16<sup>th</sup> day of March 1774.

To John Lukens Esq<sup>r</sup> by Cha<sup>s</sup> Stewart Dep. Sur<sup>r</sup>  
 Survey<sup>r</sup> Gen<sup>l</sup>

IN TESTIMONY that the above is a copy of the original remaining on file in the Department of Internal Affairs of Pennsylvania, made conformably to an Act of Assembly approved the 16th day of February, 1833, I have hereunto set my Hand and caused the Seal of said Department to be affixed at Harrisburg, this thirteenth day of February 1908.

*Henry Hoover*  
 Secretary of Internal Affairs.